



**Market Indicators**

TOP GAINER	%	TOP LOSER	%
HINDALCO	3.72	KOTAKBANK	(1.61)
TATASTEEL	3.65	ONGC	(1.53)
TCS	3.43	AMBUJACEM	(1.40)
ASIANPAINT	3.42	ITC	(1.36)
NMDC	2.73	NTPC	(1.32)

**Broder Indices**

Index	Closing Value	Change in (Pts)	Change (%)
MID CAP	6450.71	74.74	1.17
SMALL CAP	6090.16	57.78	0.96
IPO	1510.82	1.56	0.10

**Sectoral Indices**

AUTO	10981.89	150.46	1.39
BANKEX	14182.29	(1.31)	(0.01)
CD	7533.56	112.00	1.51
CG	9955.66	(8.55)	(0.09)
FMCG	6526.85	(50.33)	(0.77)
HC	8798.16	38.72	0.44
IT	5991.62	110.28	1.88
METAL	8960.04	173.54	1.98
OIL & GAS	8797.73	90.93	1.04
POWER	1773.23	3.17	0.18
PSU	6791.30	(16.97)	(0.25)
REALTY	1906.73	4.07	0.21
TECK	3618.56	55.29	1.55

**Currency Movement**

USDINR	53.95	↔
EURINR	70.72	0.22↑
GBPINR	84.03	0.22↑
JPYINR	54.36	0.67↓

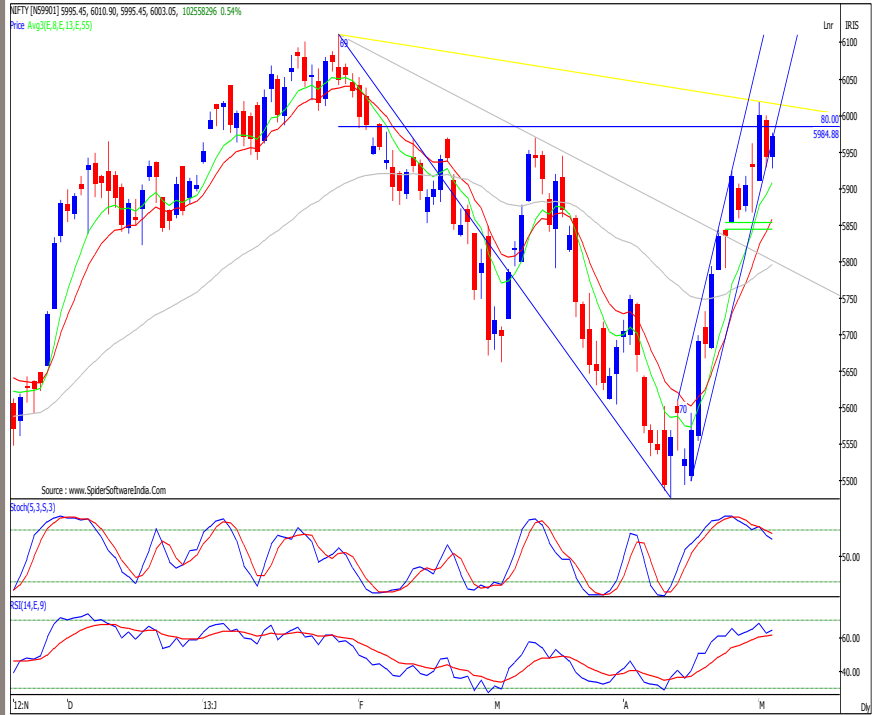
**Market Breadth**

Exchange	Advances	Declines	Unchanged
BSE	1339	1006	142
NSE	819	571	78

**MARKET STATISTICS**

ACTION	FII (₹) Cr.	DII (₹) Cr.
CASH BUY	2402.72	622.05
CASH SELL	1505.26	1162.88
(Provisional)	+897.46	(540.83)

FII Derivatives	Buy (Cr.)	(Sell Cr.)	Net (Cr.)
Index Futures	1256.90	834.95	421.94
Index Options	9294.73	10123.42	(828.69)
Stock Futures	1572.62	1687.14	(114.53)
Stock Options	1281.81	1380.59	(98.78)
Total			(620.06)



**NIFTY OUTLOOK**

Yesterday Nifty opened with flat note, and in the initial trade it breached the previous session' low of 5930 and there after it traded in narrow range of 40 points for entire session before closing the session's high.

- ◆ The price action has formed small bull candle with small lower shadow which highlights supportive efforts at lower level.
- ◆ The last two session's price action contained within last Thursday's strong bullish candle, which suggests indecisiveness. In yesterday's session, the index moved out of the steep rising channel, in place since April lows. The violation of this short term channel indicates a slowdown in upward momentum and it may lead momentum in consolidation.
- ◆ A close below last Friday's low of 5930 would set the tone for short term profit booking and lead the index towards 5850, which is a key immediate support for prices being a rising gap area of April 25, 2013 Last week's high of 6020 assumes significance in the immediate short-term. A strong close above the same would be required for continuance of the prevailing uptrend. Pullback attempts failing to steer past 6020 would keep the action range bound.
- ◆ Among oscillators, the short-term stochastic is pointing southwards after reversing from the overbought area. However, the 14 period RSI on the daily chart is yet to show any signs of reversal and indicates range bound activity will continue in the coming sessions.

For today trend deciding level for Nifty placed at 5959 if Nifty trade above this level then it may go up to 5995 - 6020 - 6035 level. However if Nifty trade below 5959 then it may find immediate support at 5940 level any violation of such support would signal further decline up to 5922 - 5900 level.

Indian Index Movement		Important Level			
MOVEMENT	SENSEX	NIFTY	SMA	SENSEX	NIFTY
OPEN	19571.66	5944.90	5 Days	19575	5950
HIGH	19694.29	5976.50	20 Days	18930	5739
LOW	19554.31	5928.45	60 Days	19147	5794
CLOSE	19673.64	5971.05	100 Days	19358	5865
CHANGE IN PTS	+98.00	+27.05	200 Days	18763	5689
CHANGE IN %	0.50	0.46	260 Days	18306	5551

\*Source: BSE, NSE, BI, Capital Market & rbi.org.in



Symbol	PIVOT TABLE				Simple Moving Average			
	S2	S1	Pivot Point	R1	R2	5 Days	20 Days	55 Days
Sensex	19501	19587	19641	19727	19781	19575	18930	19109
Nifty	5911	5941	5959	5989	6007	5950	55739	5782
Bank Nifty Future	12047	12193	12286	12433	12526	12486	11931	11881
Nifty future	5910	5941	961	5992	6012	5955	5746	5792
<b>NIFTY COMPONENTS</b>								
ACC	1183	1197	1221	1235	1259	1232	1189	1220
AMBUJACEM	183	184	187	189	192	187	180	184
ASIANPAINT	4630	4743	4818	4932	5007	4735	4671	4671
AXISBANK	1432	1446	1459	1473	1486	1484	1370	1371
BAJAJ-AUTO	1789	1808	1825	1844	1861	1855	1779	1866
BANKBARODA	679	690	697	708	715	702	679	704
BHARTIARTL	315	318	321	323	326	318	295	303
BHEL	189	191	193	195	197	192	185	193
BPCL	395	402	406	412	416	411	397	390
CAIRN	301	304	306	308	310	307	295	296
CIPLA	399	402	404	407	409	406	400	389
COALINDIA	313	315	317	319	322	317	309	315
DLF	227	230	232	235	237	237	240	255
DRREDDY	1970	1982	1998	2010	2026	2006	1937	1854
GAIL	334	337	339	342	344	345	329	330
GRASIM	2859	2899	2946	2986	3033	2949	2836	2919
HCLTECH	735	742	756	763	777	732	734	735
HDFC	837	845	853	861	869	857	813	807
HDFCBANK	666	671	675	680	684	685	661	649
HEROMOTOCO	1589	1619	1639	1669	1688	1634	1533	1611
HINDALCO	97	100	101	103	104	98	94	98
HINDUNILVR	568	571	573	576	579	560	497	472
ICICIBANK	1094	1118	1134	1158	1173	1152	1091	1084
IDFC	146	148	150	153	155	154	151	151
INDUSINDBK	449	462	469	482	489	426	434	426
INFY	2304	2322	2334	2352	2364	2280	2447	2724
ITC	321	324	328	331	335	329	309	303
JINDALSTEL	315	321	324	330	334	311	326	347
JPASSOCIAT	72	74	75	77	78	76	72	72
KOTAKBANK	696	704	713	721	730	714	670	662
LT	1534	1547	1561	1574	1587	1545	1449	1440
LUPIN	686	692	702	708	717	698	665	628
M&M	946	956	965	976	985	941	879	885
MARUTI	1641	1667	1683	1708	1725	1678	1522	1446
NMDC	125	127	129	132	133	127	127	136
NTPC	153	155	158	160	163	158	148	148
ONGC	312	315	321	325	330	325	320	317
PNB	717	728	737	748	758	761	744	777
POWERGRID	110	111	112	113	114	112	108	108
RANBAXY	436	447	454	465	471	454	450	431
RELIANCE	794	808	816	830	839	801	790	817
RELINFRA	383	391	397	405	411	387	362	399
SBIN	2164	2195	2214	2245	2263	2255	2184	2179
SESAGOA	160	162	164	166	168	159	151	157
SUNPHARMA	968	975	985	992	1002	965	914	850
TATAMOTORS	279	285	289	295	300	294	279	286
TATAPOWER	92	93	94	95	95	94	95	96
TATASTEEL	309	316	320	326	330	309	305	333
TCS	1401	1434	1453	1486	1506	1414	1456	1496
ULTRACEMCO	1866	1889	1904	1927	1943	1900	1858	1882

URJA INVESTMENT PTE. LTD.

Private &amp; Confidential



## Economic Calendar

Impact	IST	Location	Indicator	Forecast	Previous	Actual
Medium	12:15	Euro Zone	French Industrial Production (M o M)	-0.20%	0.70%	
Low	12:15	Euro Zone	French Gov Budget Balance		-27.1B	
Low	12:15	Euro Zone	French Trade Balance	-5.3B	-6.0B	
Medium	15:30	Euro Zone	German Factory Orders (M o M)	-0.40%	2.30%	
Low	19:30	USA	IBD/TIPP Economic Optimism	47.1	46.2	
May 8, 2013 Wednesday						
Low	0:30	USA	Consumer Credit (M o M)	16.2B	18.1B	
Medium	1:30	USA	Treasury Sec Lew Speaks			
Medium	4:31	Britain	BRC Retail Sales Monitor (Y o Y)		1.90%	
High	NA	China	Trade Balance	15.5B	-0.9B	
	All Day	Euro Zone	French Bank Holiday			
Medium	15:30	Euro Zone	German Industrial Production (M o M)	-0.10%	0.50%	
Medium	18:00	USA	FOMC Member Stein Speaks			
Medium	20:00	USA	Crude Oil Inventories		+6.7Mbrl	
Medium	22:30	USA	10-y Bond Auction		1.80 2.8	

## Q4 Earning Schedule

Date	Symbols
May 7, 2013	RPG Life, Allahabad Bank, Dewan Housing, Oracle Financial, Firstsource Sol, Glenmark, Jubilant Life, Brigade Enterp, GlaxoSmithKline, Shriram Trans Finance, UCO Bank, Indraprastha, Ceat, Sintex Ind, Hind Motors, IL&FS Trans, Atul.
May 8, 2013	Tata Coffee, Ranbaxy Labs, Sundaram Clayton, Fulford, Triveni Engg, SKS Microfin, GTL, Shree Digvijay, HDFC, Jubilant Ind, Jai Corp, Lupin, ABB, Aditya Birla Ch, Future Retail
May 9, 2013	Ajmera Realty, Godrej Prop, Usha Martin, Apollo Tyres, NDTV, PNB, Everest Ind, Gateway Distri, Zuari Agro Chem, Jubilant Food, Asian Paints, Deepak Nitrite, Escorts, Elgi Equipments, Emco, Gati, GTL Infra, Zuari Global, Blue Star Info, Guj Borosil, Federal-Mogul, HCL Info, Union Bank, Indian Bank, Bajaj Hind, Prism Cement
May 10, 2013	Reliance Comm, Essar Oil, Ashok Leyland, Punj Lloyd, Electrosteel, Goodricke Group, GIC Housing Fin, Balrampur Chini, Central Bank, Cummins, Claris Life, Shriram EPC, Graphite India, Gloster, Hind Composites, Mindteck, Fortis Malar, NTPC, Sobha Developer, Apollo Tyres,
May 11, 2013	GIC Housing Fin, Nakoda, Selan Explore, WS Industries, ASM Tech, Nile, BITS, Priya Limited, Dena Bank, Shree Unichem Labs, India Infoline, J. K. Cement, La Opala, ARSS Infra, Batliboi, Bengal Tea, Dhanalaxmi Cote, FIEM Ind, Arihant Super, Goenka Diamond, IFGL Refractory, Kewal Kiran, MB Parikh Fin, Reliance Media, Asian Granito, Balaji Amines



**DISCLAIMER:** This document is not for public distribution and has been furnished to you solely for your information and must not be reproduced or redistributed to any other person. Persons into whose possession this document may come are required to observe these restrictions.

The information and views in this report, our website & all the service we provide are believed to be reliable, but we do not accept any responsibility (or liability) for errors of fact or opinion. Users have the right to choose the products that suits them the most. Investment in Stocks has its own risks. Sincere efforts have been made to present the right investment perspective. The information contained herein is based on analysis and up on sources that we consider reliable. We, however, do not vouch for the accuracy or the completeness thereof. This material is for personal information and we are not responsible for any loss Incurred based upon it & take no responsibility whatsoever for any financial profits or loss which may arise from the recommendations above.

Recipients of this material should rely on their own investigations and take their own professional advice. Each recipient of this document should make such investigations as it deems necessary to arrive at an independent evaluation of an investment in the securities of companies referred to in this document including the merits and risks involved), and should consult their own advisors to determine the merits and risks of such an investment. Price and value of the investments referred to in this material may go up or down. Past performance is not a guide for future performance. Certain transactions - futures, options and other derivatives as well as non-investment grade securities - involve substantial risks and are not suitable for all investors. Reports based on technical analysis centers on studying charts of a stock's price movement and trading volume, as opposed to focusing on a company's fundamentals and as such, may not match with a report on a company's fundamentals.

All the Rights are reserved.

Contact Us: [research@urjatrade.com](mailto:research@urjatrade.com)

Web: [www.LAAVLE.com](http://www.LAAVLE.com)

Registration: NSE - CASH INB230696132 | NSE - FO INF230696132 | BSE - CASH INB010696137

**URJA INVESTMENT PTE. LTD.**

Private & Confidential